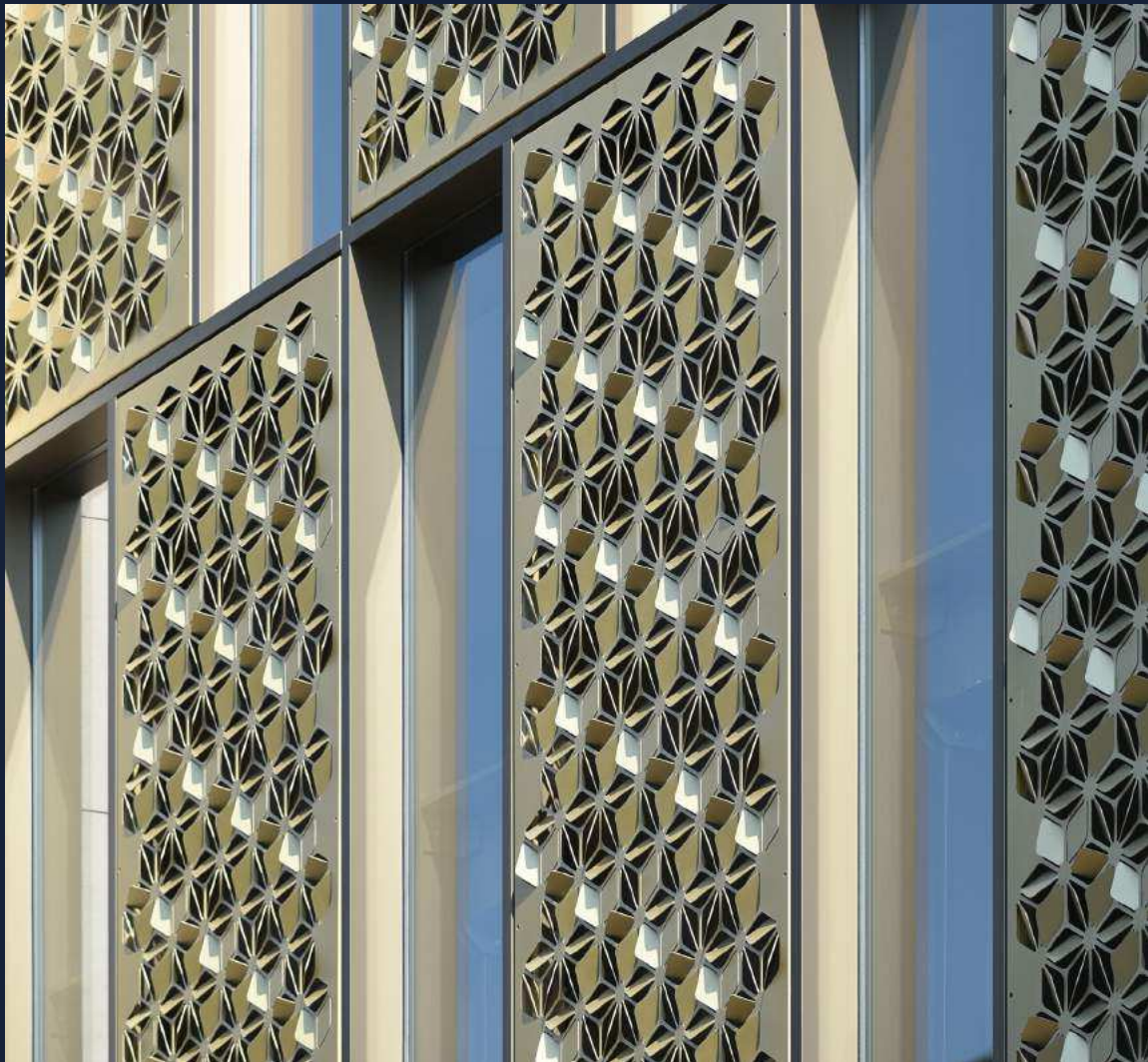


Shopping centre on Enschede's Kalandersstraat



metadecor



Shopping centre on Enschede's Kalanderstraat comes with an eye-catching facade

The BFAS architecture firm has designed a striking new shopping centre in the heart of Enschede. For this project, the architect specially developed two different types of facade panels in collaboration with Metadecor.

Shopping centre on Enschede's Kalanderstraat

SPECIFIC REQUIREMENTS

Situated in a traditional shopping area, the location posed specific requirements in terms of both architecture and urban planning. What's more, recent developments in the retail market created high demands for the building's character and ceiling height. Adding to the challenge was the fact that the future renters were unknown at the beginning of the design phase; hence, the building needed to offer numerous possibilities for subdivision. The monomorphic HEMA store on site was no longer suitable in any way, thus a completely new structure was built on the existing foundation. The new building has two floors of 6.5 metres each, which can be flexibly divided to suit the new tenants.

A MUTUAL RELATIONSHIP

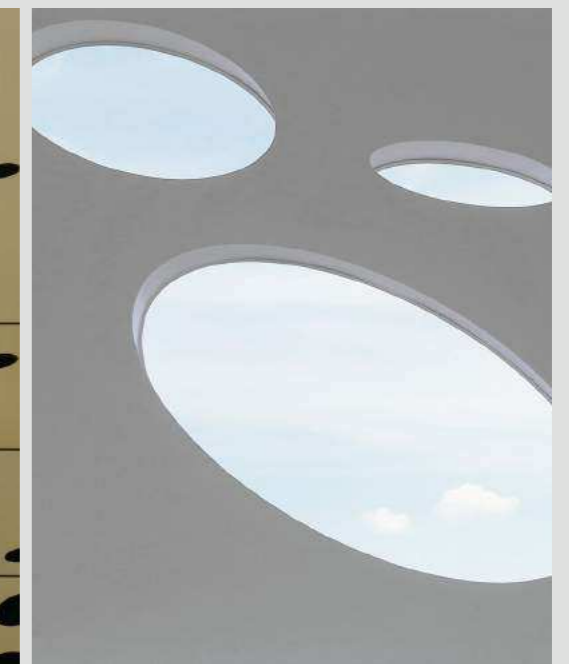
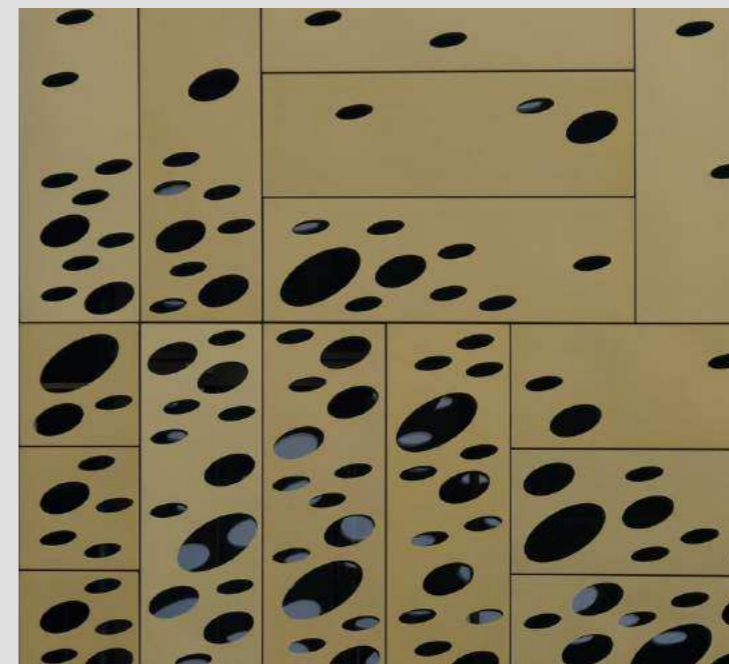
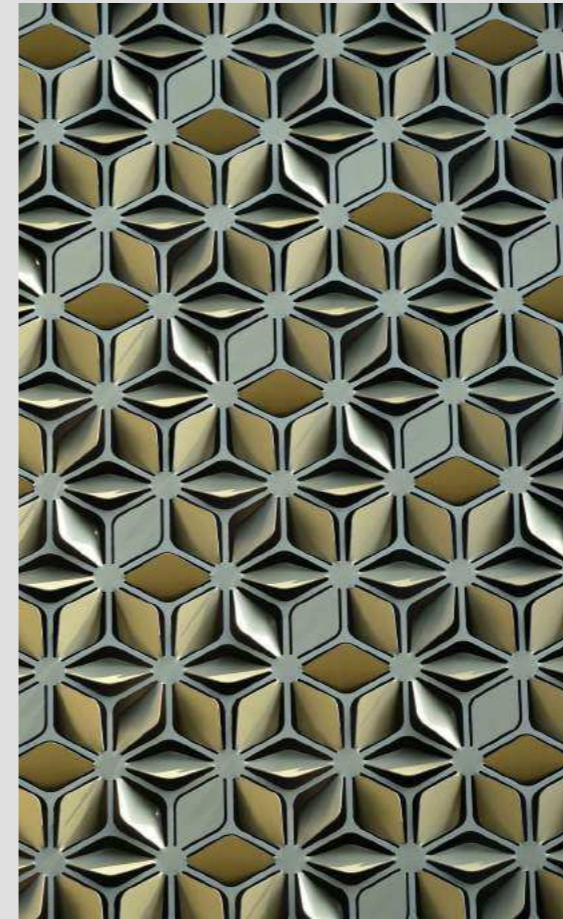
The design takes the scale of the city centre into account by dividing the facades into clearly distinguishable units. These units are set apart by large frames of Portuguese stone, which are alternately filled in with gold anodized aluminium panels and high glass shopfronts. Because of the close link between the varying height segments, shape and material, the interior can be interpreted as either a collection of shops or as a complex. The facade's most important corner is embellished with an eye-catching

pattern of elliptical perforations. Beneath this sharp corner, the seven-metre high curved glass facade is a response to the rounded corner on the building across the street. Together, these two corners extend an inviting gesture to shoppers.

PLAYING WITH LIGHT AND DARK

Two different types of facade panels were specially designed for this project in collaboration with Metadecor. The corner is covered in MD Designperforation panels, whose holes were cut out from cassettes six centimetres thick. The depth of the perforation makes for varying shades of light and dark.

The panels are made up of three segments joined together. Reinforcements were added, giving each panel an additional structural function. Consequently, no additional structural support was required, and the facade looks the same from both inside and out. There is also space between the facade and glass, allowing room for maintenance.



A combination of MD Designperforation and MD Formatura



The six centimetres thick cassettes also have a structural function



The space between the facade and glass allows room for maintenance

Creating depth

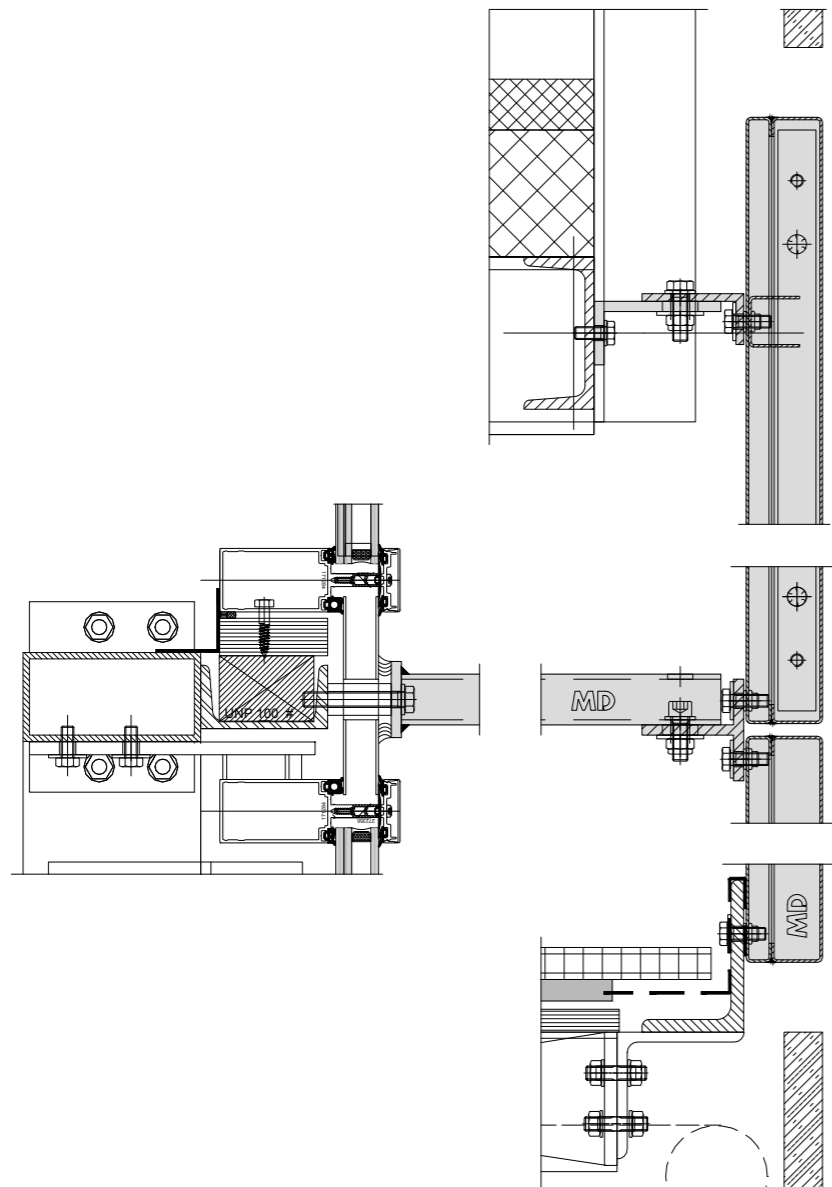
For the layers in the frames, MD Formatura was used, and the panels were cut according to a repeating pattern. The pattern was designed to evoke a flower shape. To maintain distance between the “flowers” and to give a certain sense of transformation, a cube-like shape emerges between the blossoms. These cubes create depth, which makes the flowers more visible. In addition, the pattern ensures that the panel maintains its stability.

In essence, a 3D effect is achieved in two completely different ways, constantly manifested throughout the day in the ever-changing light. The aluminium panels are attached to the building according to the MD Resto fastening system. Using this Metadecor fastening technique, the panel attachments are concealed on the back side of the construction.

Photos: Laurens Kuipers and Hans Nijs



With MD Resto the panel attachments are concealed on the back side of the construction



Vertical profile of the structure

ABOUT METADECOR

For architects, contractors and building engineers, Metadecor offers a link between the world of design and the world of technology. This results in unique facades made of high-quality products, such as MD Expanded metal, MD Designperforation and MD Formatura.

The designer's vision plays a leading role in the creation of materials. Based on that vision, Metadecor distils the ambiance, character and experience and then translates it into an innovative and creative solution. Above all, the pattern serves the designer's vision. Metadecor offers a wide range of possibilities, including 3D shapes, perforations and relieved surfaces.

Metadecor is equipped with extensive knowledge and skill to create complex, innovative, high-quality projects. From concept to installation, they are able to fully accommodate their clients' needs.

ABOUT BFAS

BFAS is a dynamic, ambitious design company for architecture and urban planning based in Amsterdam on the IJ. BFAS is active on several fronts with a wide variety of projects and clients. They're primarily focused on design for

new building projects and renovations in the residential, commercial, retail and care sectors. They also develop urban plans for urban renewal projects and designs for public space.

SUMMARY

Architect: BFAS

Client: Aan de Stegge Twello

Project date: 2016

Products: MD Designperforation and MD

Formatura Patterns: MD DE120 and MD

FO120 Specifications: none

Material: aluminium

Surface treatment: anodizing Colour: gold

Fastening system: MD Resto Options: none

NOT FOR PUBLICATION - NOTE TO THE EDITOR

For more information about Metadecor, please contact:

Marijke Nijdam, marketing and

communication Metadecor E-mail:

mnijdam@metadecor.nl

Telephone: (+31) 038 331 8181

For more information about BFAS, please

contact: Josefine Zeinstra, communication

BFAS E-mail: josefine@bf-as.nl

Telephone: (+31) 020 5353070

